

HOME

the remodeling and decorating magazine

**DECORATING
MADE EASY**

**DESIGNER
SECRETS
YOU CAN
TAKE HOME**

MAY 1999
USA \$2.99
KEYWORD ON AOL:
HOMEMAG

This Adirondack-style cottage in the foothills of the Smoky Mountains is every inch the perfect weekend retreat, with a floor plan designed for easy living and furniture that encourages relaxation both indoors and out.

RUSTIC REFINEMENT



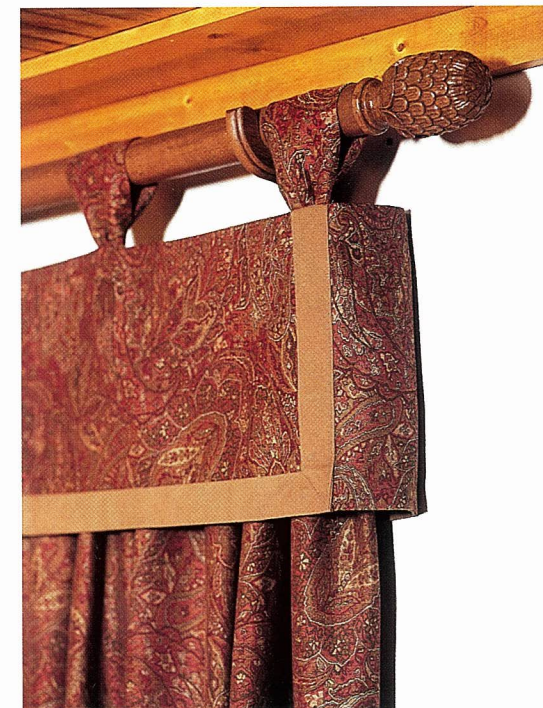
THE
BEST
LITTLE
HOUSE #40



RUSTIC REFINEMENT

ALTHOUGH THEY LOVE THEIR JOBS AND THEIR BUSY LIVES IN A nearby Southern city, the homeowners thought they had found heaven on earth when they discovered Trillium, a new community tucked into the foothills of the Smoky Mountains of North Carolina. "We need to kick back on a regular basis," they say, "and the old-fashioned mountain-village atmosphere at Trillium seemed like a wonderful place to do it." The relaxed and rustic little house they chose, created by residential designer Stephen Fuller of Mosaic Ventures, is the perfect antidote to the bustle of city life. "It's patterned after an Adirondack cabin," says Fuller. With its mix of natural materials—cedar shakes, rough-edge lap siding, and porch trim crafted of twigs and tree trunks—the exterior does indeed resemble a woody retreat; but the interior reveals a slightly more refined approach. Eschewing heavy ceiling beams and knotty-pine walls, Fuller designed a coffered ceiling inlaid with narrow battens, *left*. "It's more Craftsman than log cabin," he says.

The owners wanted to give the interior a look that was "relaxed, but not summer-camp casual," they said. "It had to have a bit of panache." For help, they called in New York designer Michael Foster, who suggested the new Arts and Crafts Collection of furniture by artist and designer Bob Timberlake for Lexington. "The cottage features some rather sophisticated detailing, yet it feels like it's part of the surrounding woods," says Foster. "Bob Timberlake's collection has that same blend of woody and elegant." Finishing touches throughout heighten this rustic refinement and tie the room together. To dress the windows, Foster chose Kirsch wooden rods and an upholstery-weight paisley brocade fabric from Beacon Hill with contrasting trim by Robert Allen, which was stitched into draperies, *right*, on a Husqvarna Viking Model #1+ Sewing and Embroidery Machine. The same machine created the embroidery on the pillows, *below*; Velcro Soft & Flexible Sew-On Tape was used for the pillow closures.





LAMPS: SEDGEFIELD BY ADAMS; CLOCK: SLIGH FURNITURE COMPANY; THROW: GOODWIN WEAVERS; ACCESSORIES: MESA INTERNATIONAL, THE GARDENER'S COTTAGE, SARREID; IMPORT SPECIALISTS.

W

RUSTIC REFINEMENT

WE LOVE THE LOOK THAT MICHAEL FOSTER CREATED FOR THE cottage," say the owners. "And he was right about the Bob Timberlake furniture—it's so inviting that it makes you want to put your feet up and relax, but it's got a certain sophistication, too." In the living room's conversation area, *left*, two wing chairs and an oversized sofa promise luxurious comfort, while soft, subdued hues of their upholstery fabric suggest "the well-loved look of furniture we grew up with," says the wife. "The upholstered pieces don't have a fresh-from-the-factory quality. They look like they've been here for a long time." This well-worn look is no accident, says Foster. "Thanks to a unique weaving process that produces amazing depth, some of the colors are brilliant and some look slightly faded," he explains. "The wing chairs, for instance, look like they might date from fifty years ago and yet have somehow stayed in perfect shape." Underfoot, a hand-tufted carpet from Capel defines the seating area and echoes the rich colors of the upholstered pieces. The square, oversized coffee table is handy for holding books, magazines, television remotes, mugs of coffee, and other weekend essentials. Wicker baskets glide out easily from a lower shelf to stow any tabletop clutter out of sight.

The owners, both of whom have busy careers in the city, have to take care of some paperwork now and then in their mountain getaway. Their "home office," located in front of a window at one end of the living room, *below*, boasts a Timberlake retro-style desk and matching swivel chair. Although privacy is not an issue here, the owners chose wooden blinds by Kirsch to close against hot summer sun or create coziness on chilly evenings. The pumpkin-colored valance and drapery fabric is from Beacon Hill; chestnut trim and tiebacks are from Robert Allen.





WALL ART: EXPRESSIONS ARTWORK COLLECTION;
LAMP: SEDGEFIELD BY ADAMS; ACCESSORIES:
MESA INTERNATIONAL, IMPORT SPECIALISTS,
SARREID, THE GARDENER'S COTTAGE.

RUSTIC REFINEMENT

THE LIVING ROOM IS LARGE ENOUGH TO accommodate a dining table, but the owners opted instead to outfit a spare room on the first floor for dining. "It's the sunniest room in the house," they say. "We love eating breakfast and lunch here." The owners, who use the cottage as a serious retreat, didn't miss the spare room. "We do entertain our Trillium neighbors often," says the wife, "but we don't have overnight guests; so this works just fine for now. Later, we can move the dining table into the living room and use the spare room for guests." The Timberlake-designed dining table and chairs, *below*, chosen for their classic good looks and large-scale comfort, will work equally well in either spot. Laid diagonally across the table, a chenille tapestry throw from Goodwin Weavers provides color and texture and makes a festive backdrop for the owners' favorite china and crystal from Mesa International, *right*. Sheer Roman shades and contrasting trim, both fabrics by Robert

Allen, let in light but provide a bit of privacy for dining. For a seamless look, the shades were attached to the window with Velcro Half & Half. The high-back dining chairs, which boast comfy upholstered seats, display the simple but distinctive Arts and Crafts detail that characterizes all the wood pieces in the new collection. This fine, Craftsman-like detailing is repeated on the sideboard, *page 8*, which features Timberlake's signature distressed cherry finish. Foster suggested these pieces because, he says, they strike a balance between the outdoorsy character of the house and the sophisticated tastes of the owners. "I think we'll be seeing more of this," he says. "Furniture that suggests a casual, relaxed feeling overall will be interwoven with a few formal touches and very rich textures such as the upholstery, draperies, throws, and pillows we've used here."

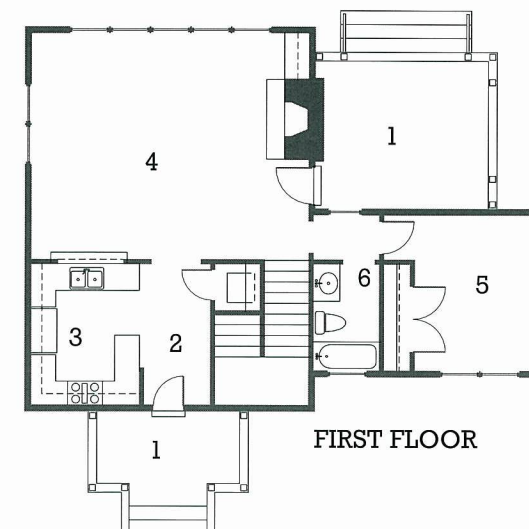


LAMP: SEDGEFIELD BY ADAMS; MIRROR: WILLOW CREEK COLLECTION;
WALL ART (AROUND MIRROR): EXPRESSIONS ARTWORK COLLECTION;
WALL ART (TROUT): JOYCE-MARTIN FINE ART; FLATWARE: ONEIDA;
ACCESSORIES: IMPORT SPECIALISTS, SARREID, MESA INTERNATIONAL.

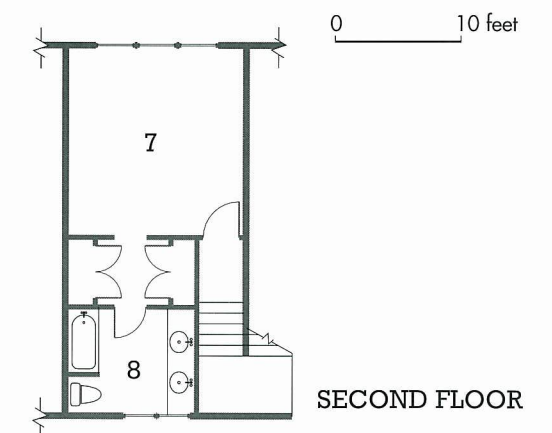


T RUSTIC REFINEMENT

THE COTTAGE'S SMALL SECOND STORY IS CURRENTLY devoted entirely to a master suite, which consists of bedroom, bath, and roomy walk-in closets, although there is an unfinished area that could quickly be converted into an additional bedroom and bath, should the owners decide to expand guest quarters. For now, however, this aerie-like master suite suits the couple perfectly, enabling them to luxuriate in quiet and solitude whenever they have the time to spend at this special place. "We like the large, sociable living spaces on the first floor," they say, "but we wanted the bedroom to be a really private space of our own."



1. COVERED PORCH
2. FOYER
3. KITCHEN
4. LIVING ROOM
5. DINING ROOM
6. BATHROOM
7. MASTER BEDROOM
8. MASTER BATH



FLOOR PLAN © MOSAIC VENTURE, INC. REPRINTED WITH PERMISSION.



In this little getaway, the emphasis is on comfort. The bed, piled high with pillows, promises deep relaxation. Floral-patterned bed linens blend beautifully with the Capel rug and the Timberlake wing chair. Behind the bed, a quarter-canopy gives the room a focal point but doesn't hide the bed's distinctive Arts and Crafts detailing, *below*. The canopy and draperies were fashioned from a richly detailed Beacon Hill fabric that mixes silk with sections of striped satin. To create the canopy illusion, Foster attached the fabric directly to the wall using Velcro's Half & Half, *left*. □

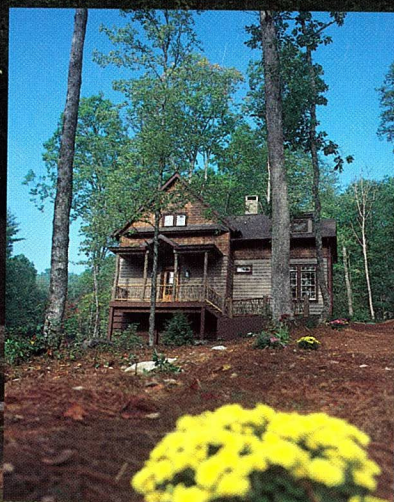


FRANK: SEDGEFIELD BY IDEMS; WALL ART:
EXPRESSIONS ARTWORK COLLECTION; THROW:
GOODWIN WEAVERS; MATTRESS AND BOX SPRING:
SEELY; ACCESSORIES: MESA INTERNATIONAL

Trillium

Links & Village

Nestled on the shores of beautiful Lake Glenville, in a peaceful valley that rises 3500-4200 feet above sea level, Trillium abounds with dramatic elevation changes that offer breathtaking views and unforgettable landscapes. Whether a rustic mountain retreat or an elegant custom cottage, all homes are architecturally designed and blended into a gorgeous mountain setting, creating the ambiance of the traditional neighborhood, reminiscent of yesteryear. Front porches and common areas of parks and nature trails, woven together with footpaths and lanes, create a place where time stands still. Trillium is a place where families are nurtured and nature is enjoyed. From the waters edge to the 18 hole Morris Hatafsky-designed vintage golf course, unmatched in it's tribute to golf's shotmaking skills, Trillium is not just a destination village and golf course community, but a place to come and stay forever.



For more information, call toll free:
Sales Office: 1-888-464-3800 or Pro Shop: 1-888-909-7171 or
email: trillium@btitelecom.net
web site: trilliumnc.com